

MAXCUT is engineered for high performance cold cutting of various metals with speed, precision and safety. Built for industrial demands, it ensures clean cuts, longer blade life and low maintenance.



POWERFUL MOTOR

High performance motor for efficient cutting.



SAFE & RELIABLE

Overload protection (Pro Model) for operator safety.



PRECISE CUTTING

Designed for accurate, burr-free cuts on a wide range of materials.



FEATURES

- Powerful motor delivers consistent cutting performance
- Stable base design reduces vibration for cleaner cuts
- Adjustable vice for secure & precise material holding
- Safety Chain and blade guard for operator protection
- Heavy duty construction for long - lasting durability
- Ideal for cutting steel, aluminium and other metals

STANDARD ACCESSORIES

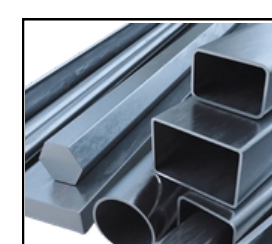
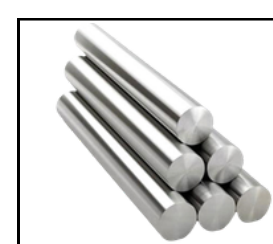
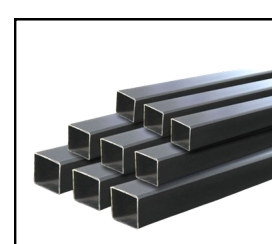
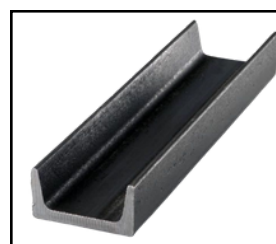
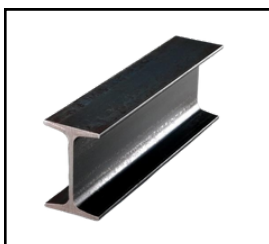
- Material Clamp/ Vice
- Safety Chain
- Allen Key Set

TECHNICAL SPECIFICATIONS

Model Name	MAXCUT 405 Pro
Motor Capacity (HP)	5 HP
No Load Speed (RPM)	4
IP Rating - Motor	IP 65
Weight	87
Cutting Blade Size	405 mm
Machine Dimensions	L665XW400XH811
Cutting Capacity	
I - Beam (Flange X Web) / Thickness	(135 mm X 100 mm) / 6 mm
C - Channel (Width x Height) / Thickness	135 mm X 100 mm / 6 mm
Hollow Round Pipe (Dia X Thickness)	135 mm / 6 mm
Hollow Square Pipe (Width X Height) / Thickness	135 mm X 135 mm / 6 mm
Solid Shaft (Dia)	65

• GST EXTRA AS APPLICABLE

SUITABLE FOR CUTTING



CLEAN CUTS

Burr-free cutting for better finish



HIGH DURABILITY

Robust construction for long life



WIDE APPLICATION

Ideal for fabrication, engineering & industries

**BUILT STRONG.
BUILT FOR INDUSTRY.**