

MAXCUT is engineered for high performance cold cutting of various metals with speed, precision and safety. Built for industrial demands, it ensures clean cuts, longer blade life and low maintenance.



### POWERFUL MOTOR

High performance motor for efficient cutting.



### SAFE & RELIABLE

Overload protection (Pro Model) for operator safety.



### PRECISE CUTTING

Designed for accurate, burr-free cuts on a wide range of materials.



## FEATURES

- Powerful motor delivers consistent cutting performance
- Stable base design reduces vibration for cleaner cuts
- Adjustable vice for secure & precise material holding
- Safety Chain and blade guard for operator protection
- Heavy duty construction for long - lasting durability
- Ideal for cutting steel, aluminium and other metals

## STANDARD ACCESSORIES

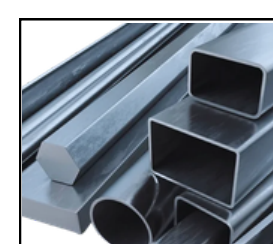
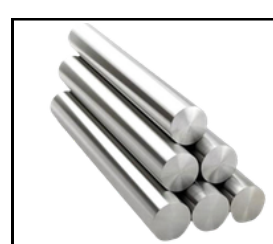
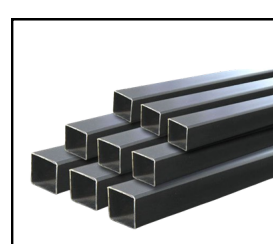
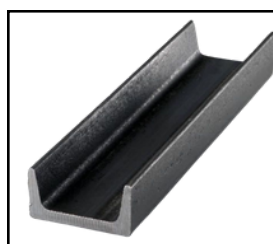
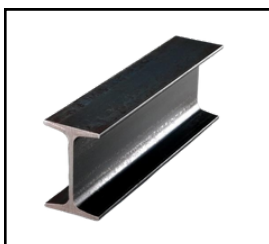
- Material Clamp/ Vice
- Safety Chain
- Allen Key Set

## TECHNICAL SPECIFICATIONS

Model Name	MAXCUT 355
Motor Capacity (HP)	3HP / 3HP
No Load Speed (RPM)	2800
IP Rating - Motor	IP55
Weight	37
Cutting Blade Size	355 mm
Machine Dimensions	L670XW350XH470
Cutting Capacity	
I - Beam (Flange X Web) / Thickness	(100 mm X 100 mm) / 4mm
C - Channel (Width x Height) / Thickness	100 mm X 100 mm / 4 mm
Hollow Round Pipe (Dia X Thickness)	100 mm / 4 mm thickness
Hollow Square Pipe ( Width X Height )/ Thickness	100 mm X 100 mm / 4 mm
Solid Shaft (Dia)	25

### • GST EXTRA AS APPLICABLE

SUITABLE FOR CUTTING



### CLEAN CUTS

Burr-free cutting for better finish



### HIGH DURABILITY

Robust construction for long life



### WIDE APPLICATION

Ideal for fabrication, engineering & industries

**BUILT STRONG.  
BUILT FOR INDUSTRY.**